

ISOTTA

Made in Italy

2023



**ISM** INTELLIGENT STEERING MODULE





# ILLUMINATED LOGO OPTION

The last ISOTTA innovation brings electricity to the center of the steering wheel **to illuminate boatbuilder logo.**

**Backlight LED** can be connected to the on/off key of the boat, to let logo illuminating when boat starts.

Colour of backlight may be customized.

Illuminated logo requires to use the new patented Isotta tilt helm, able to let steering wheel turning while the center pad still keeping the straight position.





New model for the great ISM family of ISOTTA steering wheels. (Intelligente Steering Module)  
This is a brand new design with a complete new keypad style and CNC anodized metal spokes design.  
Metal spokes could be anodized in silver, black or titanium look.  
Like all the new ISOTTA collection there is the possibility to add the illuminated logo  
Keypad button functions are 100% customizable.

- Ref. Code: ISM 07 BLACK ST

- New -



QUARK



- New -

DIAMETER:        ø 350 mm – 13.80"  
GRIP:             Genuine Leather.  
SPOKES:          Aluminium.  
CENTRAL FLANGES: Leather or PU.  
INNER RING:     Stainless steel.  
Handmade cross stitching

Brand new design, with unique CNC aluminium spoke. Very solid look design inspired to the most modern fast cars.  
Genuine leather grip, also available with perforated leather.  
Center flange in leather or poliurethane.  
Metal spoke could be anodized in silver, black or titanium look

ISOTTA HUB ADAPTER REQUIRED FOR FITTING

• Ref. Code:    1140 5 N ST

TOR 3



- New -

DIAMETER:        ø 350 mm – 13.80"  
GRIP:             Genuine or vinyl Leather.  
SPOKES:          Stainless steel 316 polished.  
CENTRAL FLANGES: Black anodized with silver ring  
CENTER CAP:      Leather.  
Handmade cross stitching

Very sporty and solid spokes looking. Design of black central flange is also very squared to accentuate its robust shape.  
The silver flat ring has six visible screws for a "rough" effect, and the center leather pad is slightly raised compared to the ring.

ISOTTA HUB ADAPTER REQUIRED FOR FITTING

• Ref. Code:    1141 5 N ST



## ISM 05 ALL-IN-ONE



### The new ISOTTA All-in-One steering wheel system includes ISM system and Sport Paddles.

The keypad take advantage of the ISOTTA patented technology preventing keyboard from turning together with the steering wheel. Buttons always maintain the position and never turn with steering wheel. (patented technology: PCT/IB2015/052111 ).

The functions which can be controlled directly from the buttons are limitless: every command of the boats can "migrate" to the keypads.

The system is designed to connect to any CAN/BUS network and integrate any CAN device.

The solid wire connection ensures the arrival of extremely secure and reliable electrical signals from the steering wheel itself, making it possible to control sensitive functions motor speed and cruise control.

Also, keyboard is directly connected to the battery of the boat and therefore it will never run out of charge, unlike wireless keyboards requiring battery.

**Side controls levers** are projected to allow precise and rapid control of engine trim, jackplate, trim tabs.

Electronic microswitches IP67 activable by simply pulling Paddles, with an immediate response of all components and a perfect feedback.

Ergonomic-design to ensure comfortable feeling without taking your hands off the wheel

External PCB for smart processing of commands

**No reason to take your hands off the steering wheel while boating: with the new ISOTTA All-in-One steering wheel system, all essential functions are right at the driver's**



# ISOTTA **SIMRAD**

## Intelligent Steering Module

NEW RELEASE – For multiple display usage



The first steering wheel with direct control of Simrad devices, now available to control up to 8 display together.

Thanks to the Isotta/Simrad partnership, steering wheel is equipped with Simrad functions control buttons .

OEM can choose which Simrad functions to control from steering wheel.

Also available with Stereo functions for selected stereo brands.

ISOTTA patented system allows keypad to always maintain the straight position while driving (center pad does not turn with steering wheel)

This is a full NMEA 2000® certificated product

ISM 01



**i-NOVO<sup>®</sup>**  
**TECH**  
AWARDS  
2015



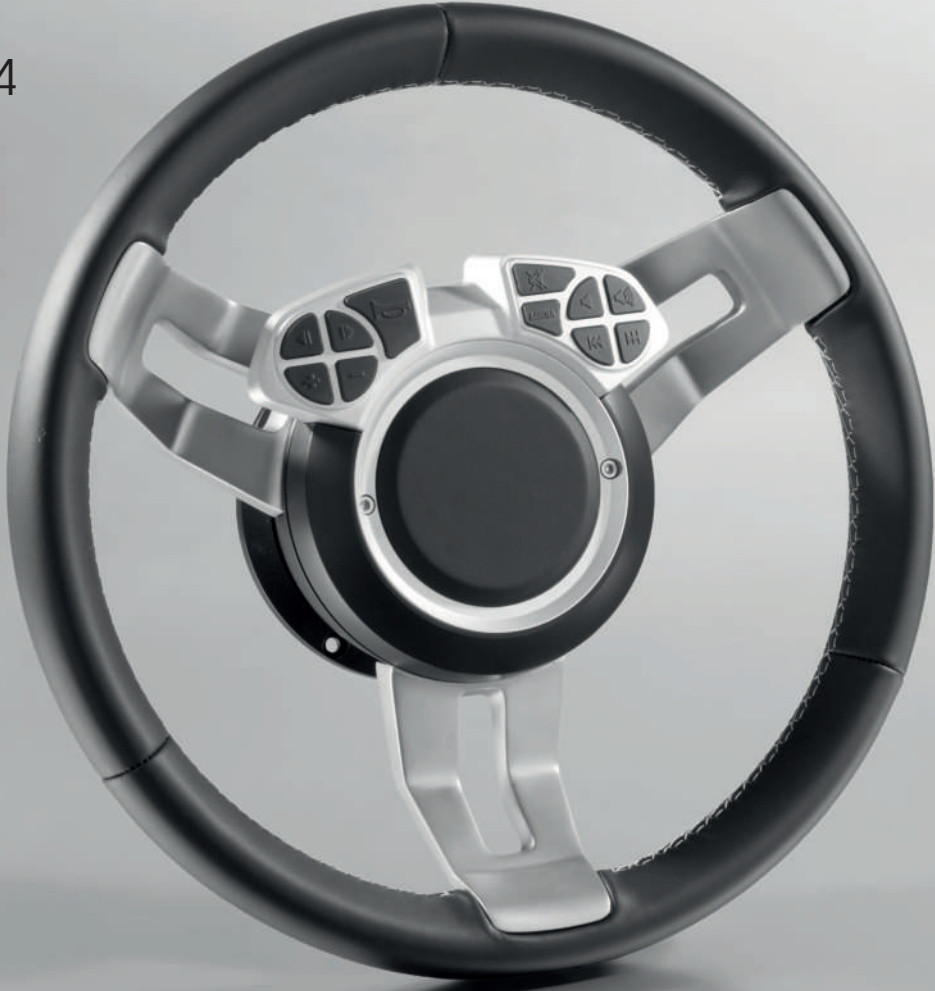
ISM 02



ISM 05



ISM 04







## SPORT PADDLES



- Projected to allow precise and rapid control of engine trim, jackplate, trim tabs and other components
- Electronic microswitches IP67 activable by simply pulling paddles, with immediate response of all components and perfect feedback.
- External Control Unit for an intelligent data processing
- Usable in replacing of the original switch controller or together with it
- Ergonomic-design to ensure comfortable feeling without taking your hands off the wheel
- Central fitting body with a limited overall dimensions for a better look design and perfect integration with steering wheel
- Adjustable two-side arms positioned along the helm to cover and protect all wires between paddles and dashboard
- Suitable for most steering helm and pump thanks to the universal fitting system.
- Nominal switching capability 20 Amp @ 14VDC resistive load
- Custom boatbuilder logo and icons available on each paddle

SUITABLE ON ALMOST EVERY ISOTTA STEERING WHEEL



FRASCO



- New -

- DIAMETER: ø 350 mm – 13.80"
- GRIP: Genuine or vinyl Leather.
- SPOKES: Stainless steel 316 mirror polished.
- CENTRAL FLANGES: Aluminium black anodized.
- INNER RING: Aluminium polished.
- CENTER CAP: Leather.
- OPTIONS: Center cap with custom logo embossed.

ISOTTA HUB ADAPTER REQUIRED FOR FITTING

• Ref. Code: 1135\_5

UNICA



- New -

- DIAMETER: ø 350 mm – 13.80"
- GRIP: Genuine or vinyl Leather.
- SPOKES: Stainless steel 316.
- CENTRAL FLANGES: Stainless steel 316.
- CENTER CAP: Leather.
- OPTIONS: Center cap with custom logo embossed.

ISOTTA HUB ADAPTER REQUIRED FOR FITTING

• Ref. Code: 1136\_5



PRN20

- New -



DIAMETER: ø 350 mm – 13.80"  
GRIP: Genuine Leather.  
SPOKES: Aluminium.  
CENTRAL FLANGES: Leather or PU.  
INNER RING: Stainless steel.  
CENTER CAP: Leather.  
OPTIONS: Center cap with custom logo embossed.

ISOTTA HUB ADAPTER REQUIRED FOR FITTING

• Ref. Code: 1132\_5



XO

- New -



DIAMETER: ø 350 mm – 13.80"  
GRIP: Genuine or vinyl Leather.  
SPOKES: Aluminium.  
CENTRAL FLANGES: Aluminium.  
CENTER CAP: Leather.  
OPTIONS: Center cap with custom logo embossed.

ISOTTA HUB ADAPTER REQUIRED FOR FITTING

• Ref. Code: 1120\_5



ADMETO



DIAMETER: ø 350 mm – 13.80"  
GRIP: Leather.  
SPOKES: Polished with black inserts.  
CENTRAL FLANGE: Black anodized aluminium.  
INNER RING: Polished aluminium.  
CENTER CAP: Leather.  
OPTIONS: Center cap with custom logo.

ISOTTA HUB ADAPTER REQUIRED FOR FITTING

• Ref. Code: 1128\_5



FANETE



Silver spokes

DIAMETER: ø 350 mm – 13.80"  
GRIP: Leather.  
SPOKES: Billet aluminium (available black – silver - titanium anodized).  
CENTRAL FLANGE: Aluminium (available black or silver anodized).  
CENTER CAP: Leather.  
OPTIONS: Center cap with custom logo embossed.

ISOTTA HUB ADAPTER REQUIRED FOR FITTING

• Ref. Code: 1123\_5



Black spokes



Titanium spokes



MAKAIRA



DIAMETER: ø 350 mm – 13.80"  
FRONT GRIP: Stainless steel 316 polished.  
REAR GRIP: No slide rubber with finger rest shape.  
SPOKES: Stainless steel 316 polished.  
CENTER CAP: Stainless steel 316 polished.  
OPTIONS: Center cap with custom logo embossed

HUB ADAPTER REQUIRED FOR FITTING

• Ref. Code: 1126\_5

MAKAIRA  
WITH KNOB



COPER18



DIAMETER: ø 350 mm – 13.80"  
GRIP: Leather.  
SPOKES: Aluminium (available black-silver or titanium anodized).  
CENTRAL FLANGE: Aluminium (available black or silver anodized).  
INNER RING: Polished aluminium.  
CENTER CAP: Leather.  
OPTIONS: Center cap with custom logo.

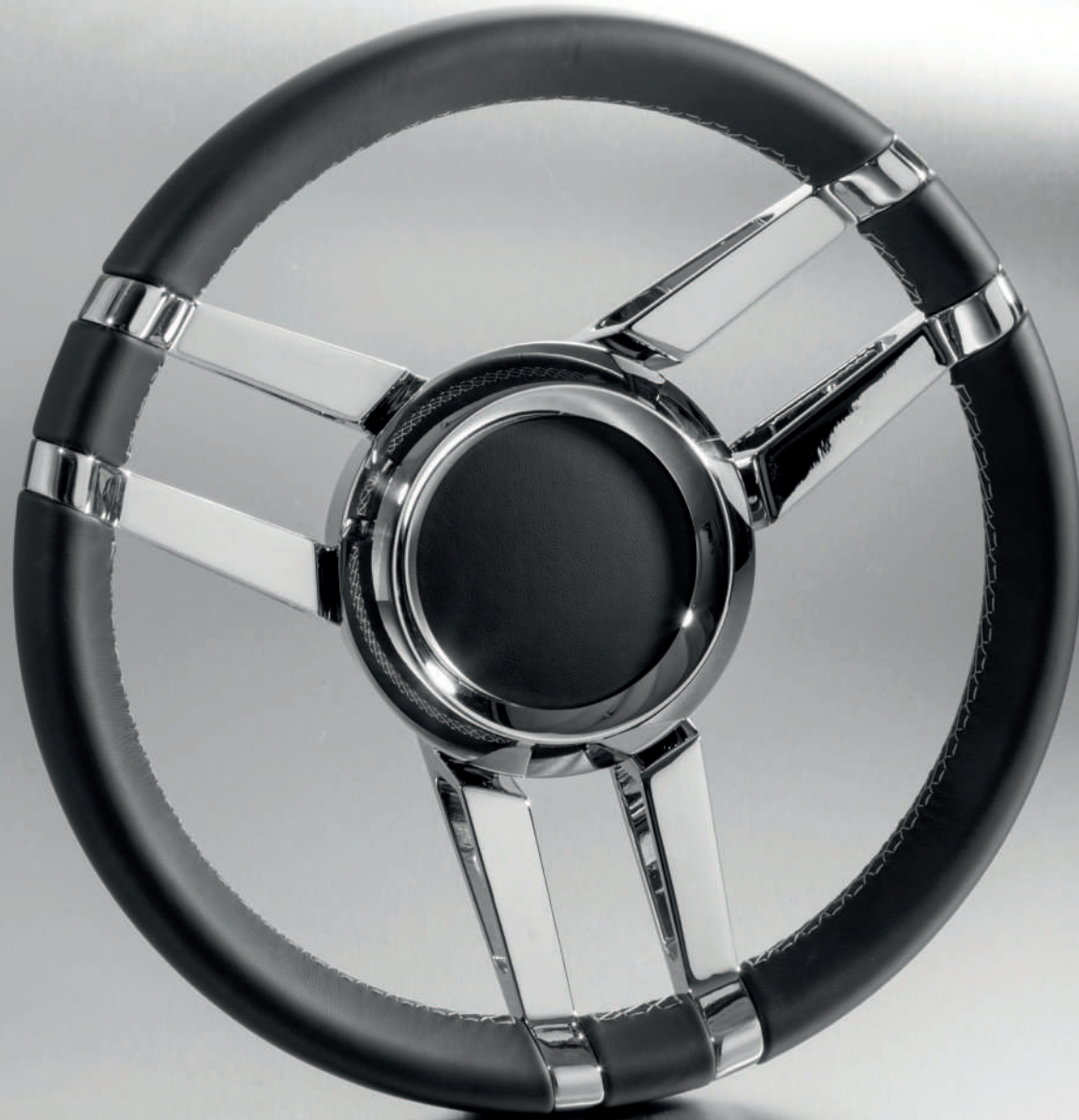
ALSO AVAILABLE WITH HEATED OPTION

ISOTTA HUB ADAPTER REQUIRED FOR FITTING

• Ref. Code: 1127\_5



POLARIS



DIAMETER:      ø 350 mm – 13.80"  
GRIP:            Leather.  
SPOKES:         Stainless steel 316 polished.  
CENTRAL FLANGES: Stainless steel 316 polished.  
CENTER CAP:    Leather.  
OPTIONS:        Center cap with custom logo embossed.

ISOTTA HUB ADAPTER REQUIRED FOR FITTING

• Ref. Code:   1117\_5

ARES



DIAMETER:      ø 350 mm – 13.80"  
GRIP:            Leather.  
SPOKES:         Stainless steel 316 polished.  
CENTRAL FLANGES: Black anodized aluminium with inner silver ring.  
CENTER CAP:    Leather OR stainless steel 316 polished.  
OPTIONS:        Center cap with custom logo embossed.

ISOTTA HUB ADAPTER REQUIRED FOR FITTING

• Ref. Code:   1118\_5



TORINDI



DIAMETER:        ø 350 mm – 13.80"  
GRIP:             Leather.  
SPOKES:          Stainless steel 316 polished.  
CENTRAL FLANGES: Black anodized aluminium with inner silver ring.  
CENTER CAP:     Leather OR stainless steel 316 polished.  
OPTIONS:         Center cap with custom logo embossed.

ISOTTA HUB ADAPTER REQUIRED FOR FITTING

• Ref. Code:   1121\_5

GRAFFIO



DIAMETER:        ø 350 mm – 13.80"  
GRIP:             Leather.  
SPOKES:          Anodized silver aluminium.  
CENTRAL FLANGES: Anodized silver aluminium.  
CENTER CAP:     Leather.  
OPTIONS:         Center cap with custom logo embossed.

ISOTTA HUB ADAPTER REQUIRED FOR FITTING

• Ref. Code:   1120\_5



ROVERETO



DIAMETER: ø 360mm - 14.20"  
GRIP: Leather.  
SPOKES: Double equal spokes in stainless steel 316 polished.  
CENTRAL FLANGES: Aluminium, powder coated.  
INNER RING: Stainless steel polished.  
CENTER CAP: Leather.  
OPTIONS: Center cap with custom logo embossed.

HUB ADAPTOR REQUIRED FOR FITTING

• Ref. Code: 178\_6

DIAMA



DIAMETER: ø 350 mm - 13.80"  
GRIP: Leather.  
SPOKES: Equal spokes in Stainless steel 316 polished.  
CENTRAL FLANGES: Stainless steel 316 polished (or leather).  
CENTER CAP: Leather.  
OPTIONS: Center cap with custom logo embossed.

ISOTTA HUB ADAPTER REQUIRED FOR FITTING

• Ref. Code: 188\_5 mod. DIAMA  
• Ref. Code: 188\_5FL mod. DIAMA FL

DIAMA FL





PACHU



DIAMETER:        ø 350 mm – 13.80"  
GRIP:             Leather.  
SPOKES:          Equal spokes in stainless steel 316 polished.  
CENTRAL FLANGES: Stainless steel 316 polished.  
CENTER CAP:     Leather.  
OPTIONS:         Center cap with custom logo embossed.

INTEGRATED HUB ADAPTER

• Ref. Code: 1106\_5

DAPONTE



DIAMETER:        ø 355mm – 14"  
GRIP:             Leather.  
SPOKES:          Equal spokes in stainless steel 316 polished.  
                      Back side in leather.  
CENTRAL FLANGES: Stainless steel 316 polished.  
CENTER CAP:     Leather.  
OPTIONS:         Center cap with custom logo embossed.

ISOTTA HUB ADAPTER REQUIRED FOR FITTING

• Ref. Code: 1105\_5





BERRA SP



- DIAMETER:        ø 350mm - 13.80"
- GRIP:             Leather.
- SPOKES:          Equal spokes in stainless steel SS316 polished.
- CENTRAL FLANGE: Aluminium, silver anodized.
- CENTER CAP:     Brushed aluminium or leather.
- OPTIONS:         Center cap with custom logo embossed.

ISOTTA HUB ADAPTER REQUIRED FOR FITTING

- Ref. Code: 189\_5\_SP

BERRA FL



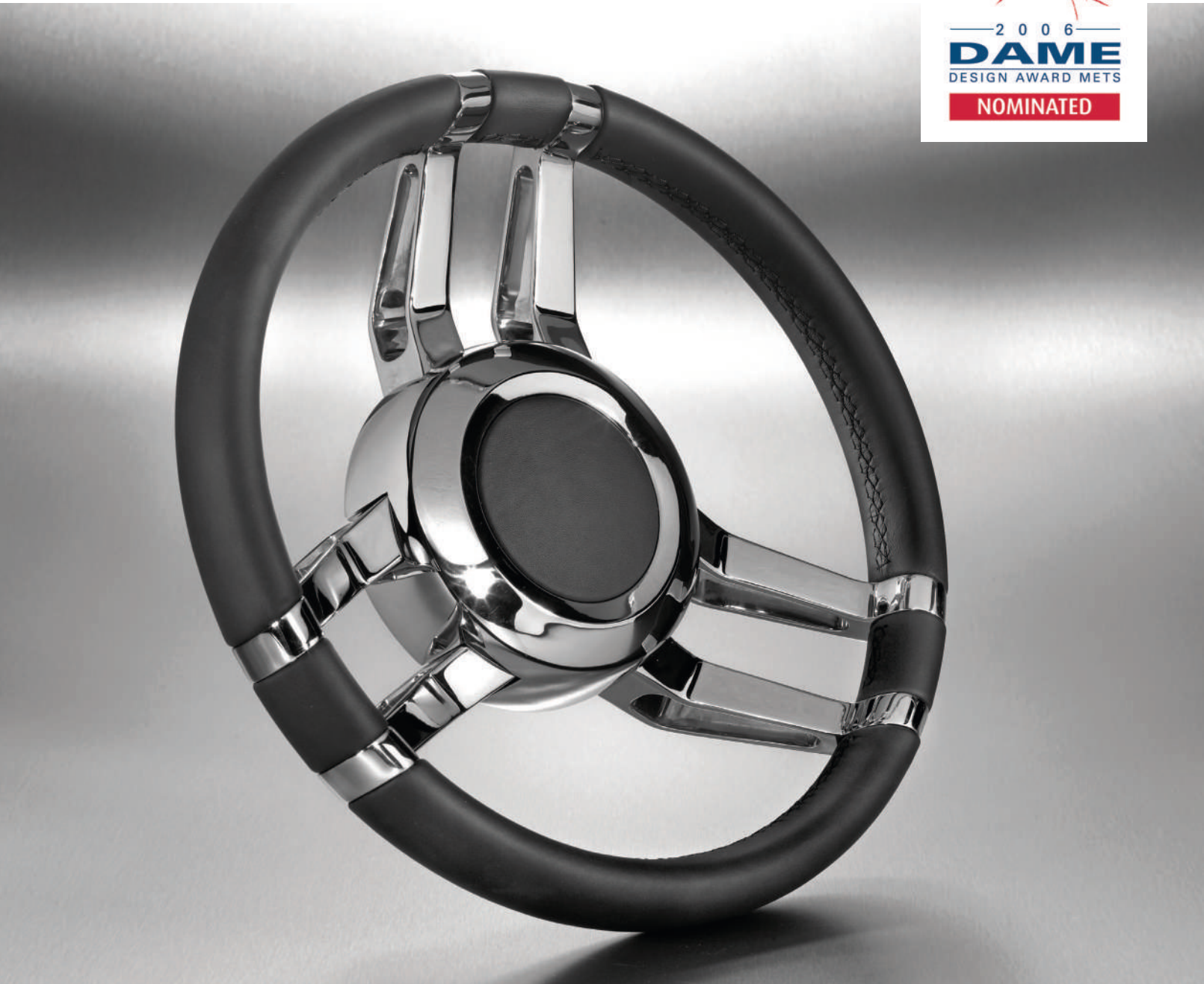
- DIAMETER:        ø 350mm - 13.80"
- GRIP:             Genuine or vinyl Leather.
- SPOKES:          Stainless steel SS316 polished.
- CENTRAL FLANGE: Stainless steel SS316 polished.
- CENTER CAP:     Leather.
- OPTIONS:         Center cap with custom logo embossed.

ISOTTA HUB ADAPTER REQUIRED FOR FITTING

- Ref. Code: 189\_5\_FL



CARLOTTA



- DIAMETER:       ø 350 mm – 13.80"
- GRIP:            Leather.
- SPOKES:          Equal double-spokes in stainless steel SS316.
- CENTRAL FLANGE: Stainless steel SS316 polished.
- CENTRAL CAP:    Leather.
- OPTIONS:         Central cap with custom logo embossed.
- Central flange in leather.

INTEGRATED HUB ADAPTER 3/4" TAPER REQUIRED FOR FITTING

• Ref. Code:   140\_5\_ST

CARLOTTA SATIN



- DIAMETER:       ø 350 mm – 13.80"
- GRIP:            Leather.
- SPOKES:          Stainless steel 316 satin/mat finishing.
- CENTRAL FLANGE: Stainless steel 316 satin/mat finishing.
- CENTRAL CAP:    Leather.
- OPTIONS:         Central cap with custom logo embossed.

INTEGRATED HUB ADAPTER REQUIRED FOR FITTING

• Ref. Code:   1107\_5



TIVOLI ST



DIAMETER:       ø 350 mm – 13.80"  
GRIP:            Leather. Elliptic section.  
SPOKES:         Equal spokes in stainless steel 316 polished.  
CENTRAL FLANGE: Stainless steel 316 polished.  
CENTRAL CAP:   Leather.  
OPTIONS:         Center cap with custom logo embossed.

INTEGRATED HUB ADAPTER REQUIRED FOR FITTING

• Ref. Code:   196\_5

TIVOLI SAT



DIAMETER:       ø 350 mm – 13.80"  
GRIP:            Leather. Elliptic section.  
SPOKES:         Stainless steel 316 polished/mat finishing.  
CENTRAL FLANGE: Stainless steel 316 polished/mat finishing.  
CENTRAL CAP:   Leather.  
OPTIONS:         Center cap with custom logo embossed.

INTEGRATED HUB ADAPTER REQUIRED FOR FITTING

• Ref. Code:   1112\_5



CORSARO

- DIAMETER:    ø 350mm - 13.80"
- GRIP:         Leather.
- With or without six chromed rings.
- SPOKES:       Aluminium, silver anodized.
- CENTRAL FLANGE: Aluminium, silver anodized (or black)
- CENTER CAP:   Leather.
- OPTIONS:       Center cap with custom logo embossed.

INTEGRATED HUB ADAPTER

- Ref. Code:   1104\_5
- 1104\_5\_6R



CORSARO 6R



MLB



- DIAMETER:    ø 350mm - 13.80"
- GRIP:         Leather.
- SPOKES:       Titanium or silver aluminium with leather on the bottom.
- STUD:         Special stud in stainless steel 316 polished.
- CENTRAL FLANGES: Black anodized aluminium.
- CENTER CAP:   Aluminium embossed.
- OPTIONS:       Center cap with custom logo.

ISOTTA HUB ADAPTER REQUIRED FOR FITTING

- Ref. Code:   1109\_5



REX



DIAMETER:      ø 350mm - 13.80"  
GRIP:            Leather.  
SPOKES:         Double equal spokes in stainless  
                    steel 316 polished.  
CENTRAL FLANGE: Aluminium, black anodized.  
INNER RING:     Aluminium, silver anodized.  
CENTER CAP:     Leather.  
OPTIONS:        Center cap with custom logo  
                    embossed.

INTEGRATED HUB ADAPTER

• Ref. Code:   199\_5



MEDELANA



DIAMETER:      ø 360mm - 14.18"  
GRIP:            Leather.  
SPOKES:         Equal spokes in stainless steel 316  
                    polished.  
CENTRAL FLANGE: Powder coated or leather.  
INNER RING:     Stainless steel 316 polished.  
CENTER CAP:     Leather.  
OPTIONS:        Center cap with custom logo  
                    embossed. Central flange in leather.

ISOTTA HUB ADAPTER 3/4" TAPER REQUIRED FOR FITTING

• Ref. Code:   177\_6





# MESOLA

- DIAMETER: ø 350mm - 13.80"
- GRIP: Leather.
- GRIP RING: Stainless steel 316 polished.
- SPOKES: Equal double-spokes in stainless steel 316 polished.
- CENTRAL FLANGE: Leather.
- INNER RING: Stainless steel 316 polished.
- CENTER CAP: Leather.
- OPTIONS: Central cap with custom logo embossed.

ISOTTA HUB ADAPTER 3/4" TAPER REQUIRED FOR FITTING

• Ref. Code: 179\_5



# IDRA



- DIAMETER: ø 350mm - 13.80"
- GRIP: Leather.
- SPOKES: Single poke in stainless steel 316 polished. Back side in leather.
- CENTRAL FLANGE: Painted or leather.
- INNER RING: Stainless steel 316 polished.
- CENTER CAP: Leather.
- OPTIONS: Central cap with custom logo embossed.

ISOTTA HUB ADAPTER 3/4" TAPER REQUIRED FOR FITTING

• Ref. Code: 186\_5



# CELLINI ST

- DIAMETER: ø 350mm - 13.80"
- GRIP: Leather.
- SPOKES: 4 spokes at 90° in stainless steel 316 polished. Back side in leather.
- CENTRAL FLANGE: Leather.
- INNER RING: Stainless steel 316 polished.
- CENTER CAP: Leather.
- OPTIONS: Central cap with custom logo embossed.

ISOTTA HUB ADAPTER 3/4" TAPER REQUIRED FOR FITTING

• Ref. Code: 147\_5



# FERRARA 2

- DIAMETER: ø 350mm - 13.80"
- GRIP: Leather.
- SPOKES: 2 pairs 180° spokes in stainless steel 316 polished. Back side in leather.
- CENTRAL FLANGE: Leather.
- INNER RING: Stainless steel 316 polished.
- CENTER CAP: Leather.
- OPTIONS: Central cap with custom logo embossed. Central flange powder coated.

ISOTTA HUB ADAPTER 3/4" TAPER REQUIRED FOR FITTING

• Ref. Code: 171\_5



# FERRARA 3

- DIAMETER: ø 350mm - 13.80"
- GRIP: Leather.
- SPOKES: 3 pairs equal spokes in stainless steel 316 polished. Back side in leather.
- CENTRAL FLANGE: Leather.
- INNER RING: Stainless steel 316 polished.
- CENTER CAP: Leather.
- OPTIONS: Central cap with custom logo embossed. Central flange powder coated.

ISOTTA HUB ADAPTER 3/4" TAPER REQUIRED FOR FITTING

• Ref. Code: 170\_5





RATIO



- DIAMETER: ø 350mm - 13.80"
- GRIP: Leather.
- SPOKES: Double equal spokes in stainless steel 316 polished.
- CENTRAL FLANGE: Aluminium, black anodized.
- INNER RING: Aluminium, silver anodized.
- CENTER CAP: Leather.
- OPTIONS: Central cap with custom logo embossed.

INTEGRATED HUB ADAPTER

• Ref. Code: 1100\_5

PRESTIGIO SS



- DIAMETER: ø 350mm - 13.80"
- GRIP: Leather.
- VERTICAL SPOKES: Stainless steel 316 polished.
- HORIZONTAL SPOKES: Satin and anodized aluminium..
- INNER RING: stainless steel 316 polished..
- CENTER CAP: Leather.
- OPTIONS: Central cap with custom logo embossed.

ISOTTA HUB ADAPTER 3/4" TAPER REQUIRED FOR FITTING

• Ref. Code: 155\_5\_SS



VERTICE Wood



DIAMETER:      ø 350mm - 13.80"  
GRIP:            Wood.  
SPOKES:        3 equal spokes in anodized  
                     aluminium.  
CENTRAL FLANGE: Anodized aluminium.  
CENTER CAP:    Leather.  
OPTIONS:        Central cap with custom logo  
                     embossed. Spokes in chrome plate

ISOTTA HUB ADAPTER 3/4" TAPER REQUIRED FOR FITTING

• Ref. Code:    143\_5\_RW

VERTICE Leather



DIAMETER:      ø 350mm - 13.80"  
GRIP:            Leather.  
SPOKES:        3 equal spokes in anodized  
                     aluminium.  
CENTRAL FLANGE: Anodized aluminium.  
CENTER CAP:    Leather.  
OPTIONS:        Central cap with custom logo  
                     embossed.

ISOTTA HUB ADAPTER 3/4" TAPER REQUIRED FOR FITTING

• Ref. Code:    143\_5

VERTICE 6R



DIAMETER:      ø 350mm - 13.80"  
GRIP:            Leather with 6 chromed rings.  
SPOKES:        3 equal spokes in anodized aluminium.  
CENTRAL FLANGE: Anodized aluminium..  
CENTER CAP:    Leather.  
OPTIONS:        Central cap with custom logo embossed.

ISOTTA HUB ADAPTER 3/4" TAPER REQUIRED FOR FITTING

• Ref. Code:    143\_5\_6R



VALLELUNGA



- DIAMETER: ø 345mm - 13.58" - Flat bottom shape.
- GRIP: Leather.
- SPOKES: Anodized aluminium. Vertical sticks in stainless steel 316 polished.
- CENTRAL FLANGE: Anodized aluminium, smokey grey finishing.
- CENTRAL RING: Polished aluminium.
- OPTIONS: Central cap with custom serigraphy logo.

ISOTTA HUB ADAPTER 3/4" TAPER REQUIRED FOR FITTING

• Ref. Code: 126\_4

ZULAG



- DIAMETER: ø 345mm - 13.58"
- GRIP: Leather.
- SPOKES: Satin and anodized aluminium. Inner portion in SS316 polished.
- CENTRAL FLANGE: Anodized aluminium.
- INNER RING: Stainless steel 316 polished.
- CENTRAL CAP: Aluminium disk.
- OPTIONS: Central cap with custom serigraphy logo.

ISOTTA HUB ADAPTER 3/4" TAPER REQUIRED FOR FITTING

• Ref. Code: 134\_4

BORGIA

- DIAMETER: ø 360mm - 14.18"
- GRIP: Leather.
- SPOKES: Parallel spokes in stainless steel 316 polished. Back side in leather.
- CENTRAL FLANGE: Stainless steel 316 polished.
- CENTRAL CAP: Leather.
- OPTIONS: Central cap with custom logo embossed.

ISOTTA HUB ADAPTER 3/4" TAPER REQUIRED FOR FITTING

• Ref. Code: 181\_6



ITACA



- DIAMETER: ø 410mm - 16.14"
- GRIP: Leather.
- SPOKES: 5 pair brushed and anodized spokes.
- CENTRAL FLANGE: Brushed and anodized aluminium.
- CENTRAL CAP: Leather.
- OPTIONS: Central cap with custom logo embossed.

ISOTTA HUB ADAPTER 3/4" TAPER REQUIRED FOR FITTING

• Ref. Code: 175\_40



CESCA



- DIAMETER:       ø 350mm - 13.80"
- GRIP:            Poliurethan leather look or leather.  
                    (model CESCA INS with 3 ABS inserts, various colors).
- SPOKES:          3 equal spokes in stainless steel 316 polished.
- CENTRAL CAP:    Leather.
- OPTIONS:         Center cap with custom logo embossed.

INTEGRATED HUB ADAPTER REQUIRED FOR FITTING

- Ref. Code:   184\_5 mod. CESCA  
                  187\_5 mod. CESCA INS

CESCA INS



- DIAMETER:       ø 350mm - 13.80"
- GRIP:            Poliurethan leather look.
- SPOKES:          Satin silver aluminium.
- CENTRAL FLANGE: Aluminium powder coated.
- CENTRAL CAP:    Silver brushed aluminium.
- OPTIONS:         Center cap with custom logo.

ISOTTA HUB ADAPTER REQUIRED FOR FITTING

- Ref. Code:   1113\_5PUN

VTR14





# ARGO

- DIAMETER: ø 350mm - 13.80"
- GRIP: Poliurethan, leather look. Elliptic section.
- SPOKES: Double equal spokes in satin silver aluminium.
- CENTRAL FLANGE: Aluminium, black anodized.
- CENTRAL CAP: Aluminium disk.
- OPTIONS: Center cap with custom serigraphy logo.

INTEGRATED HUB ADAPTER

- Ref. Code: 197\_5



# SKEMA

- DIAMETER: ø 350mm - 13.80"
- GRIP: Poliurethan, leather look.
- SPOKES: Brushed/anodized silver aluminium.
- CENTRAL RING: Anodized silver aluminium.
- CENTRAL CAP: Leather or aluminium disk.
- OPTIONS: Center cap with custom logo embossed.

NTEGRATED HUB ADAPTER REQUIRED FOR FITTING

- Ref. Code: 191\_5 mod. SKEMA  
191\_5\_2 mod. SKEMA 2



# RUNZI

- DIAMETER: ø 350mm - 13.80"
- GRIP: Poliurethan, leather look. Elliptic section.
- SPOKES: 5 equal spokes in satin silver aluminium.
- CENTRAL FLANGE: Aluminium, black anodized.
- CENTRAL CAP: Aluminium disk.
- OPTIONS: Center cap with custom serigraphy logo.

INTEGRATED HUB ADAPTER REQUIRED FOR FITTING

- Ref. Code: 194\_5



# SKEMA 2





FIUME INS

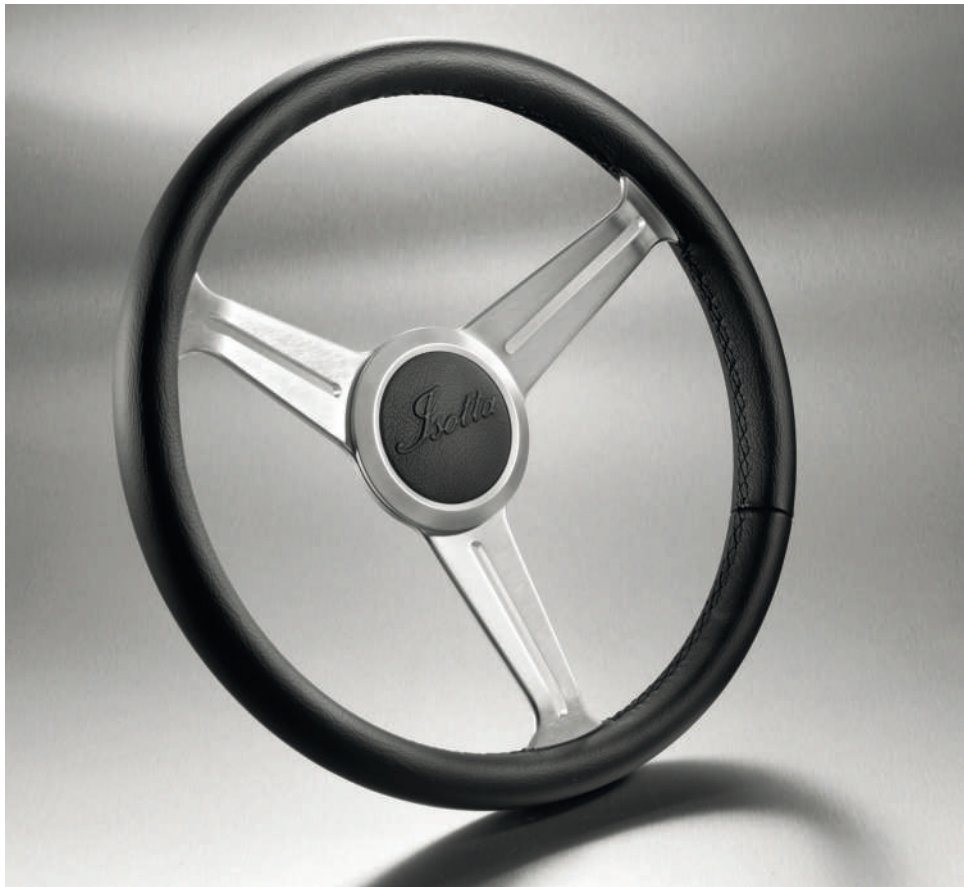


DIAMETER:        ø 350mm - 13.80"  
GRIP:             Poliurethan, leather look. (Option: 3 insert with selected colors or finishing)  
SPOKES:          Anodized aluminium.  
CENTRAL FLANGE: Brushed/anodized aluminium.  
CENTRAL CAP:    Leather.  
OPTIONS:         Center cap with custom logo embossed.

INTEGRATED HUB ADAPTER REQUIRED FOR FITTING

• Ref. Code:   185\_5\_INS  
                 185\_5

FIUME



R-EVO



DIAMETER:        ø 350mm - 13.80"  
GRIP:             Poliurethane, leather look with leather finger rest.  
SPOKES:          Brushed/anodized aluminium.  
CENTRAL RING:    Mirror polished aluminium.  
CENTRAL CAP:     Aluminium disk.  
OPTIONS:         Custom serigraphy logo.

ISOTTA HUB ADAPTER 3/4" TAPER REQUIRED FOR FITTING

• Ref. Code:   125\_5\_PNF



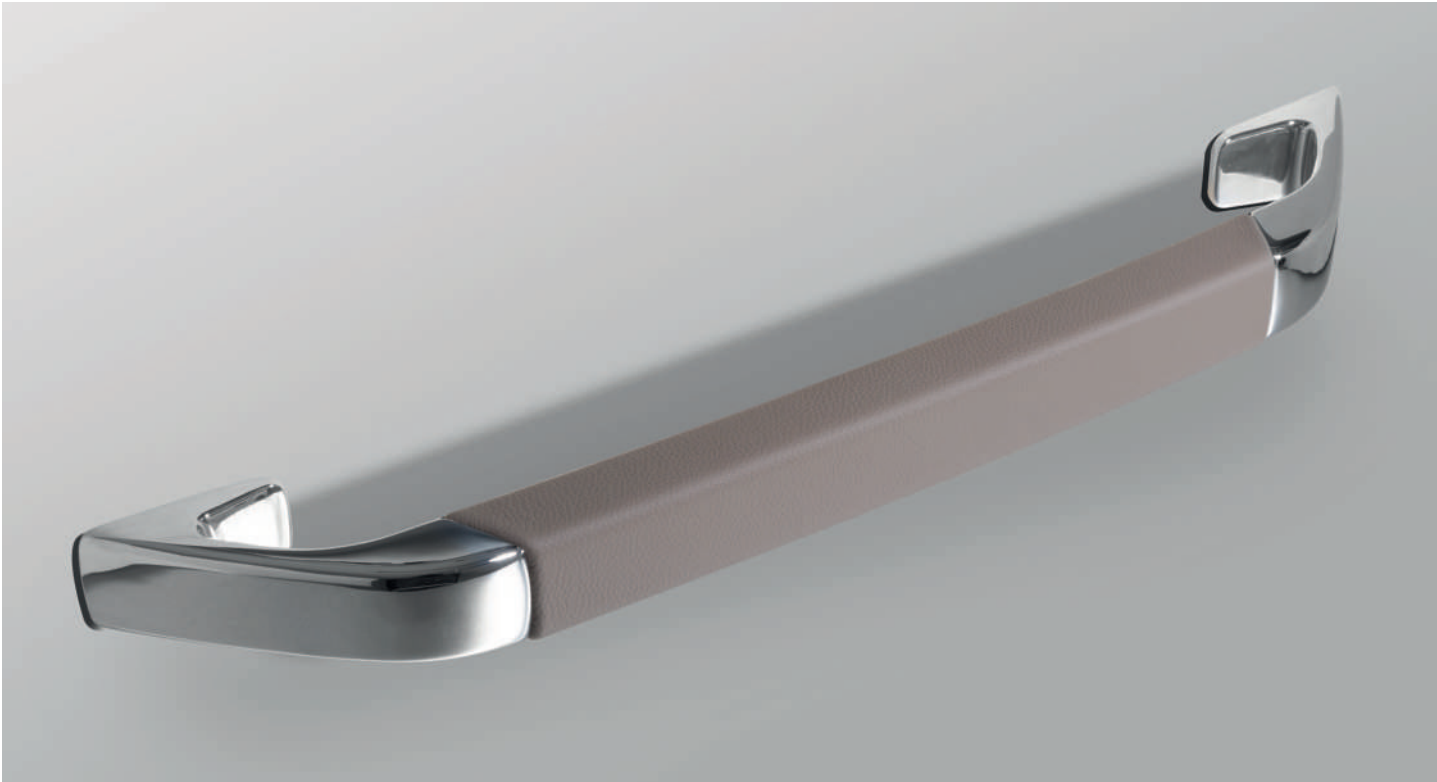


HANDRAIL HR03



POLISHED STAINLESS TERMINALS.  
CONFORTABLE HANDLE GRIP IN GENUINE LEATHER (DIFFERENT COLOURS AVAILABLE)  
HANDMADE SEWING  
EMBOSSED LOGO AVAILABLE  
OVERALL LENGHT 500MM (DIFFERENT SIZE AVAILABLE)

• Ref. Code: HR03







**ISOTTA**

IFRA SRL

tel. +39 0532 1883899 • [info@isotta.it](mailto:info@isotta.it) • [www.isotta.com](http://www.isotta.com)